



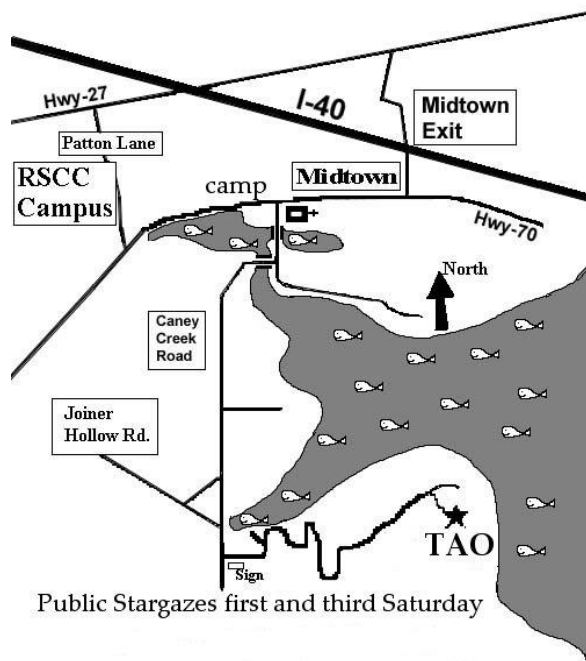
Here's part of our recent Astronomy Class preparing to explore the usefulness of the POD.

**TAO** is located 4 miles south of the Roane County Main Campus on a remote hilltop. From I-40 traveling west, take the Midtown exit (exit 350). Turn left off the exit ramp and go south 0.2 mile to US Hwy. 70. Turn right on US 70 and go 3.25 miles to Caney Creek Road (beside the church), just before Roane County Park. Turn left onto Caney Creek Road, then go 1 mile south and turn right across the bridge. Go 2 miles and continue straight through the 'Y' at Joiner Hollow Rd. Continue 1000 feet, turning left at the blacktop road at the Observatory sign. Follow the road up the hill for 0.9 miles to the observatory, coordinates 35.83 N and 84.62W.

RSCC is a TBR and an AA/EEO Institution. Pub. #07-037.

For more information please contact  
Dr. David Fields at 865 882-4533

Tamke-Allan Observatory  
Roane State Community College  
276 Patton Lane  
Harriman, TN 37748-5011  
1-866-GO2-RSCC  
Ext. 4533 or 4591



Public Stargazes first and third Saturday

---

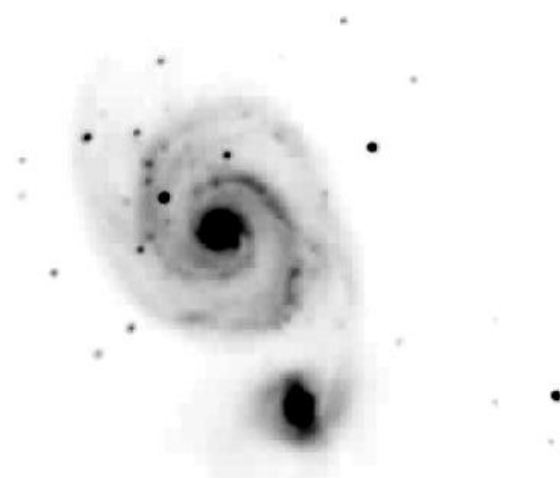
# TAMKE-ALLAN OBSERVATORY

of

## ROANE STATE COMMUNITY COLLEGE

---

Classes in Astronomy/  
Public Observing/Outreach/  
Astronomical Investigation



M51 Whirlpool Galaxy 60s DS, LX-200 scope  
RSCC Tamke Allan Observatory, 3/18/01  
R. Morrow, D.R. Fudge, D.E. Fields

*20011-2012 Opportunities*

# WELCOME TO THE TAMKE-ALLAN OBSERVATORY

Astronomy is a gateway to the sciences. Through astronomy, we recognize the relevance of biology and the necessity of physics and chemistry for understanding our place in the universe. Our universe offers our galaxy – the Milky Way – deep sky wonders in diffuse glow, jeweled clusters of stars, magnified glimpses of distant planets and their star-like moons, craters of the moon and elusive comets.

Tamke-Allan Observatory (TAO) joins the Roane County community to actively reduce illumination from street lamps, car headlights and lighted signs. Because of their wasted skylight, our night skies are becoming less accessible. Only when we find an isolated mountain, such as the one on which the TAO is located, can we rediscover our astronomical heritage.

Tamke-Allan Observatory is an educational and research facility that supports the educational community in several important ways:

- \* **The Observatory supports college courses in astronomy.** Astronomy classes are offered at the Harriman and Oak Ridge campuses, with laboratory sessions held at the Observatory. See <http://www.roanestate.edu/obs>
- \* **Public Stargazes are offered twice per month**, free of charge, at 1900h (7 PM) on

the 1st and 3rd Saturdays. **Amateur astronomers** are invited to share their equipment and knowledge. Observing begins at dark at our public stargazes -- bring binoculars, telescopes, red-light flashlights, and cookies.

- \* We involve students and local amateur astronomers in **Research** in Optical and Radio Astronomy. If research is your interest, contact Dr. Fields at 865-882-4533
- \* **Mary Watson Research Scholarships** are available for high school students -- see our web site for details.
- \* **Non-credit courses and workshops complement our Astronomy program.** Examples are **Astronomy Camp** offered in the summer, the Teacher Workshops in Astronomy, workshops in Astronomy for Scouts, and occasional special topics courses.
- \* **Special events** are associated with remarkable astronomical events (eclipses, transits, and comets) and astronomy-related cultural events. Our **ham radio station (N4TAO)** supports these occasions.
- \* Our **Sidewalk Astronomy** activities bring staff, students, and amateur astronomers to schools and public events.
- \* You are invited to visit our **Internet home** at <http://www.roanestate.edu/obs>. Submit your Internet address -- we will send you (e-mail) announcements of our activities.

## OUR TELESCOPES

Our primary telescope for viewing is an 8-foot refractor telescope with an 8-inch diameter lens. Students and visitors enjoy this excellent telescope, which is housed in our dome. Our radio telescopes are used for student research.

A more impressive optical instrument --from the perspective of research and photography - is our 12-inch reflector telescope, a donation in honor of Marcus Morrow. It is computer controlled and offers spectacular vistas of more distant objects. Because of the extreme distances involved, the telescopes routinely observe objects via light that is thousands or millions of years old.

The Oak Ridge and East Tennessee Sections of the American Society of Mechanical Engineers recently donated our Mary Watson memorial H-alpha solar telescope and pier. We have a variety of smaller telescopes and digital cameras, a well-equipped observatory and a great classroom with lots of challenges.

